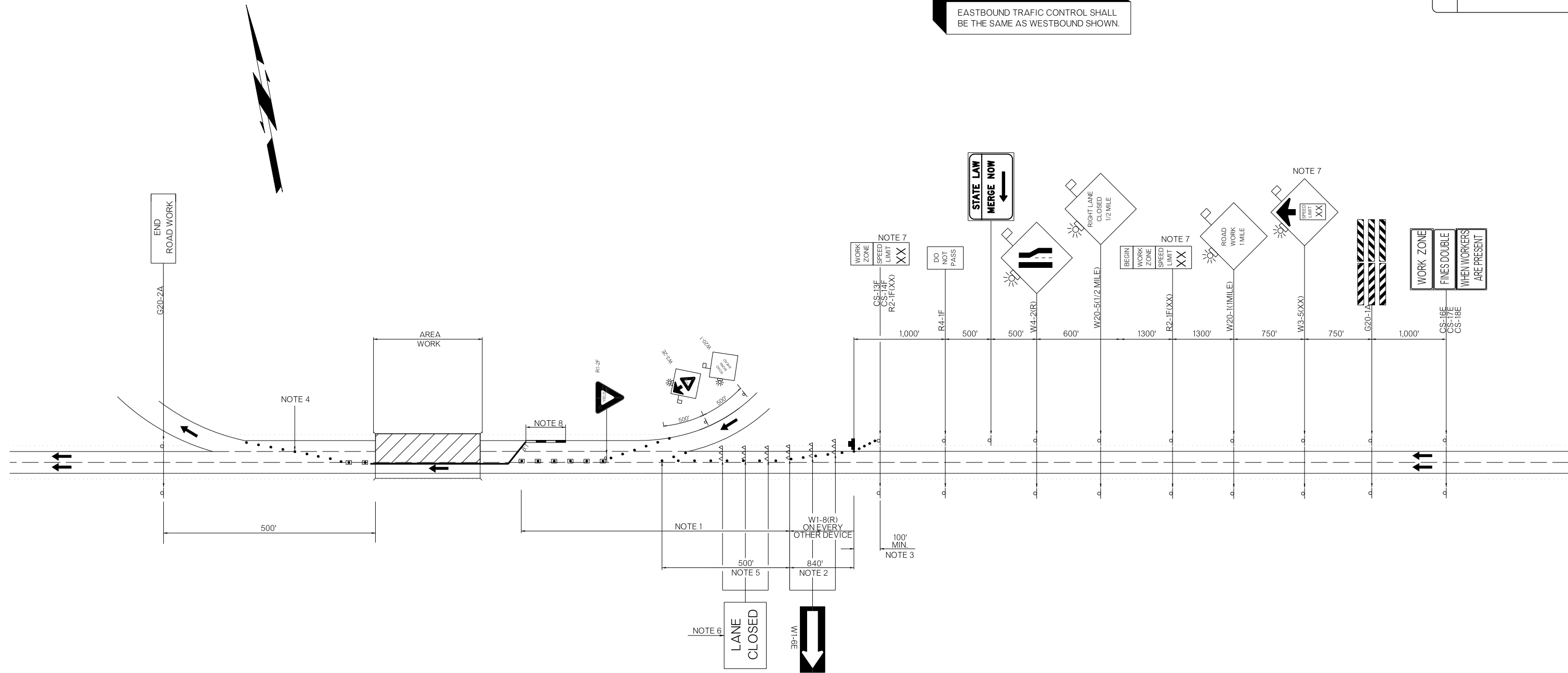


REVISIONS		
REV. NO.	DESCRIPTION	DATE

EASTBOUND TRAFFIC CONTROL SHALL BE THE SAME AS WESTBOUND SHOWN.



NOTE 1
 MAXIMUM SPACING BETWEEN CHANNELIZING DEVICES (FEET) SHALL BE TWICE THE POSTED SPEED LIMIT (M.P.H.) WITH THE FOLLOWING EXCEPTIONS. SPACING SHALL NOT EXCEED 50 FEET FOR CONES OR TUBE CHANNELIZERS. SPACING SHALL NOT EXCEED 75 FEET FOR CHANNELIZER CONES. SPACING SHALL NOT EXCEED 100 FEET FOR TYPE II BARRICADES, VERTICAL PANELS OR DRUMS.

NOTE 2
 MAXIMUM SPACING BETWEEN CHANNELIZING DEVICES (FEET) SHALL BE EQUAL TO THE POSTED SPEED LIMIT (M.P.H.) WITH THE FOLLOWING EXCEPTIONS. SPACING SHALL NOT EXCEED 25 FEET FOR CONES OR TUBE CHANNELIZERS. SPACING SHALL NOT EXCEED 50 FEET FOR TYPE II BARRICADES, VERTICAL PANELS OR DRUMS.

NOTE 3
 A MINIMUM OF FIVE (5) CHANNELIZING DEVICES SHALL BE PLACED THROUGH THIS TAPER.

NOTE 4
 DOWNSTREAM TAPERS SHALL CONTAIN A MINIMUM OF FOUR (4) CHANNELIZING DEVICES.

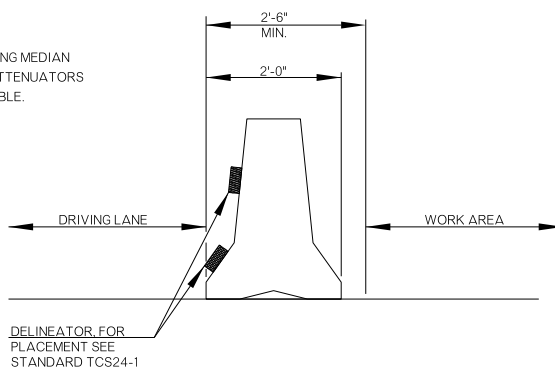
FOR ADDITIONAL INFORMATION ABOUT TAPER LENGTHS AND SPACING OF CHANNELIZING DEVICES, SEE STANDARD DRAWING TCS2-1-(LATEST REVISION).

NOTE 5
 A LONGITUDINAL BUFFER AREA, TO ALLOW WORKERS TIME TO EVACUATE THE WORK AREA, SHOULD BE PROVIDED. FOR GUIDELINES ON SETTING THE LENGTH OF THIS BUFFER, SEE STANDARD DRAWING TCS2-1-(LATEST REVISION). ACTUAL LENGTH SHALL BE DETERMINED BY FIELD CONDITIONS AND THE JUDGEMENT OF THE ENGINEER.

NOTE 6
 TYPE III BARRICADES WITH SIGNS READING "LANE CLOSED" (R11-2) SHALL BE PLACED EVERY 2,000 FEET THROUGH ACTIVITY AREA. THESE TYPE III BARRICADES AND SIGNS MAY BE OMITTED ON MOVING OPERATIONS AND SHORT DURATION PROJECTS.

NOTE 7
 CONSTRUCTION SPEED LIMIT TO BE DETERMINED BY THE DIVISION ENGINEER.

NOTE 8
 IF CLEAR ZONE CAN BE MET BY FLAIRING MEDIAN BARRIER, THE SAND FILLED IMPACT ATTENUATORS MAY BE OMITTED. SEE FLAIR RATE TABLE.



- KEY:**
- SIGN
 - DRUM
 - ◻ CHANNELIZING CONE
 - ▨ WORK AREA
 - ▲▲▲ TYPE III BARRICADE
 - ▬ ARROW DISPLAY
 - ▬ CONST. ZONE IMPACT ATTENUATOR
 - ▬ PRECAST CONCRETE MEDIAN BARRIER

NOT TO SCALE

TRAFFIC CONTROL DETAIL BRIDGES A & B PHASE 2			Drawn	SC	7/16
			Design	SC	7/16
STATE OF OKLAHOMA			Checked	JLS	7/16
			DEPARTMENT OF TRANSPORTATION		TRAFFIC ENGINEERING JAMI SHORT
DIVISION 1		JOB PIECE NO. 31694(04)	SHEET NO. T002		